

MANCHESTER
1824

The University of Manchester

University of Manchester Cycling Parking Study



January 2017

INTRODUCTION

Julia Durkan – Sustainable Campus Officer, University of Manchester

- **Project Objectives**
- **Study Area**
- **Forecast of Future Cycle Demand**
- **Cycle Parking Audits**
- **Data Collection**
- **Questions**

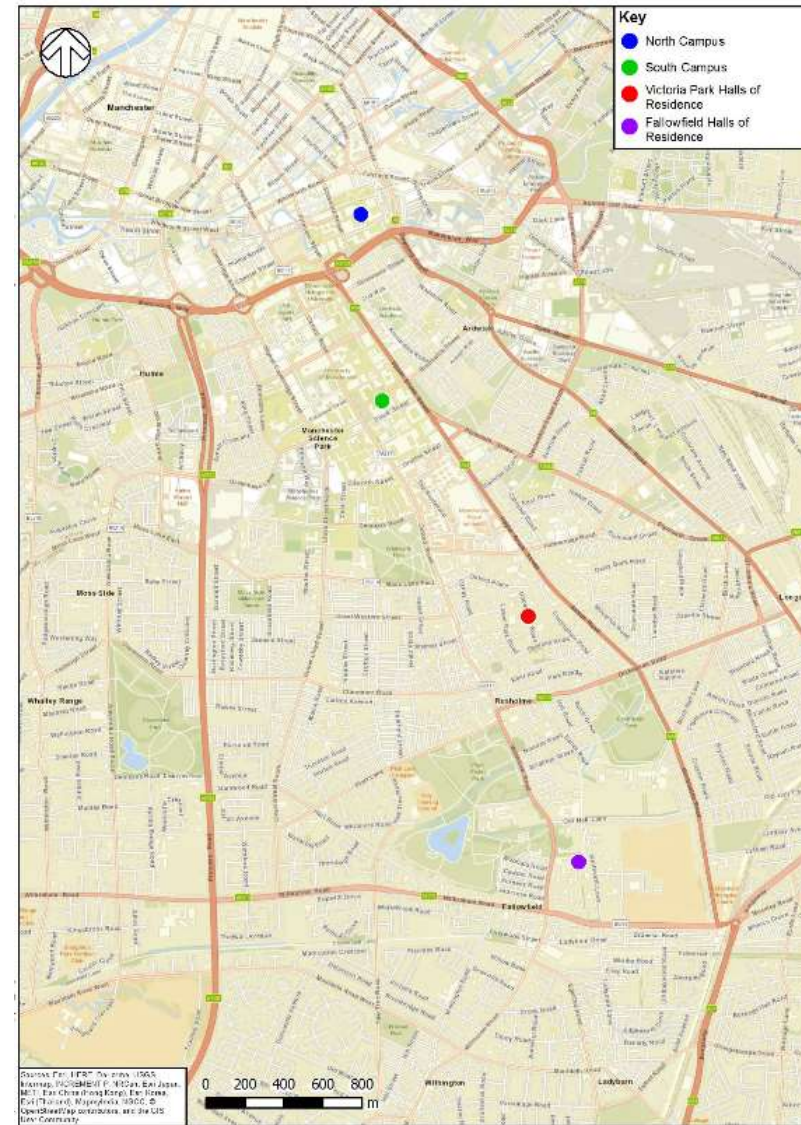
PROJECT OBJECTIVES

- Predicted growth in cycling rates amongst staff and students between 2015 – 2025
- Audit and map existing cycle parking facilities
- Audit, plot and verify future cycle parking locations
- Provide online GIS mapping



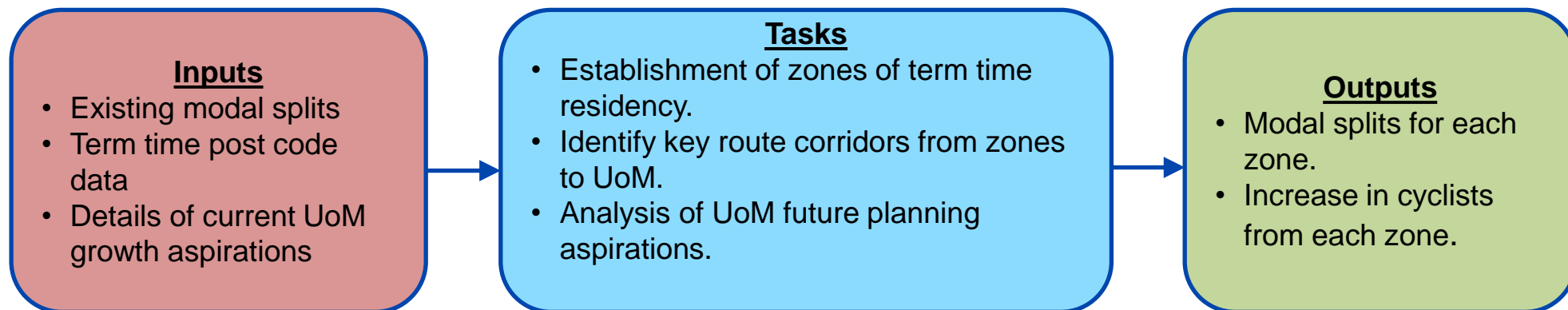
STUDY AREA

- North Campus
- South Campus
- Fallowfield Halls of Residence
- Victoria Park Halls of Residence

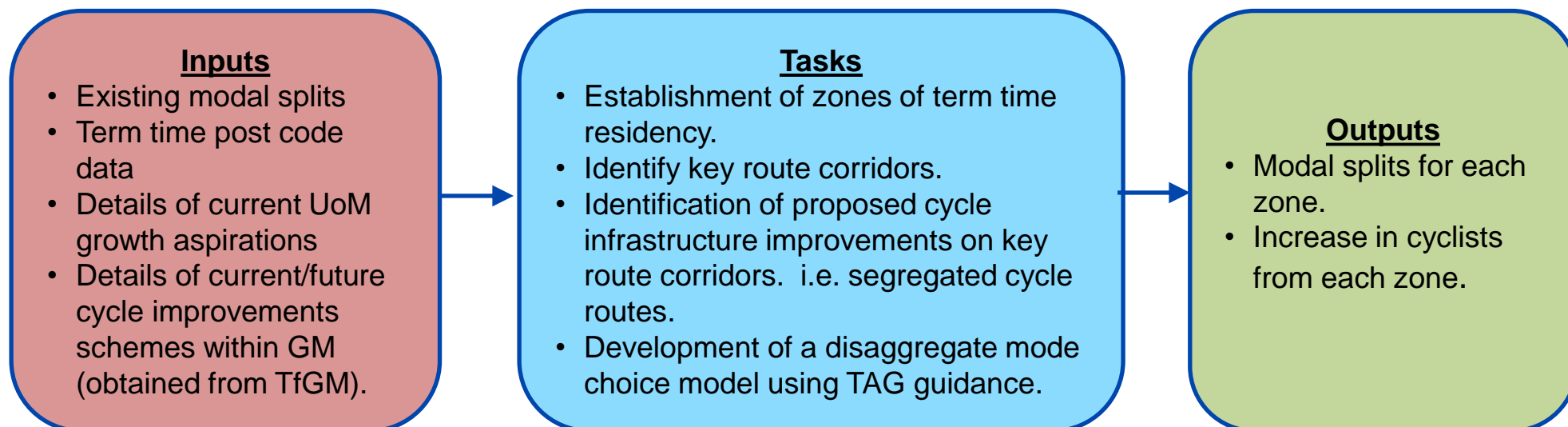


OVERVIEW OF FORECASTING METHODOLOGY

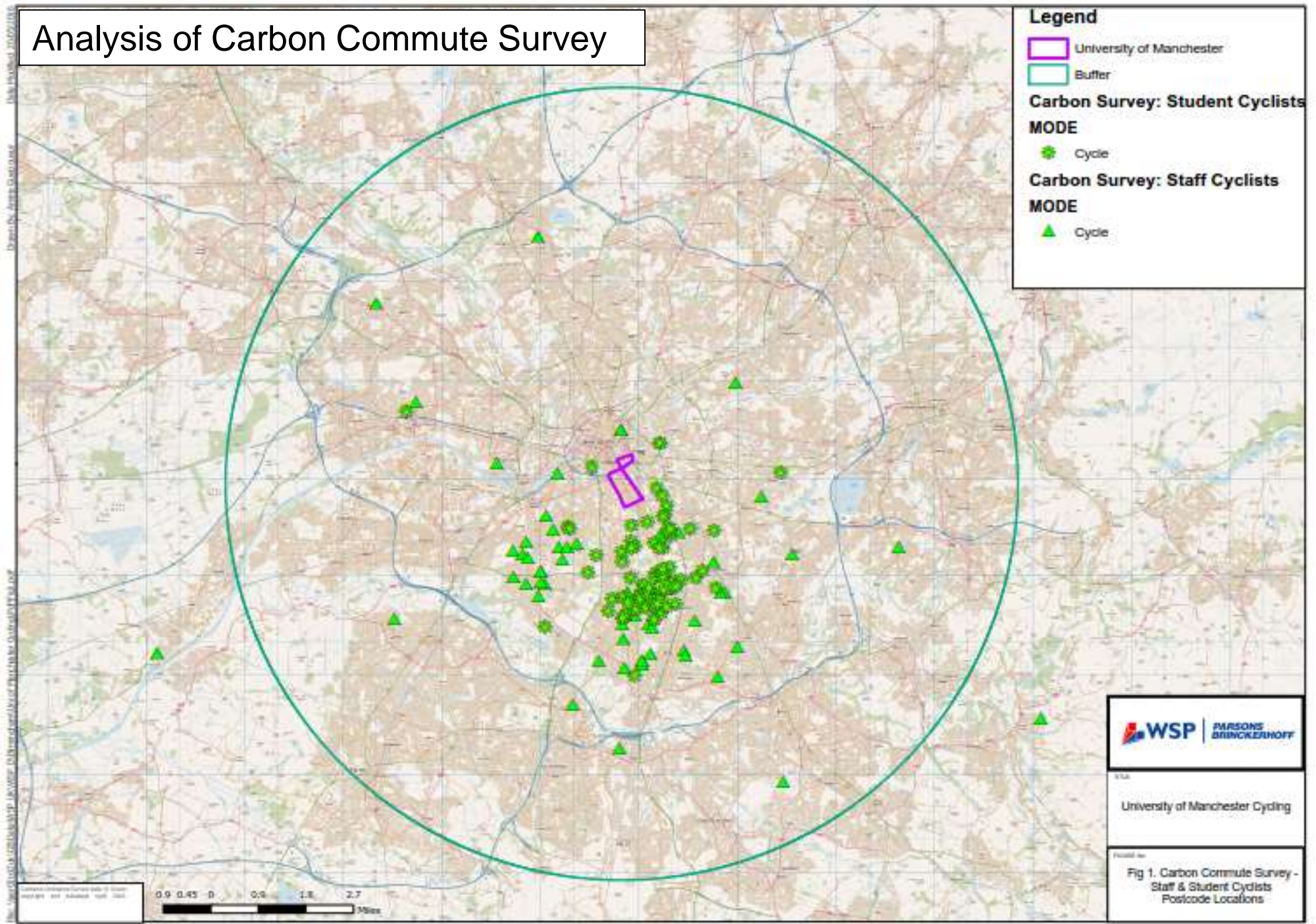
Scenario 1: Growth Based on UoM growth aspirations



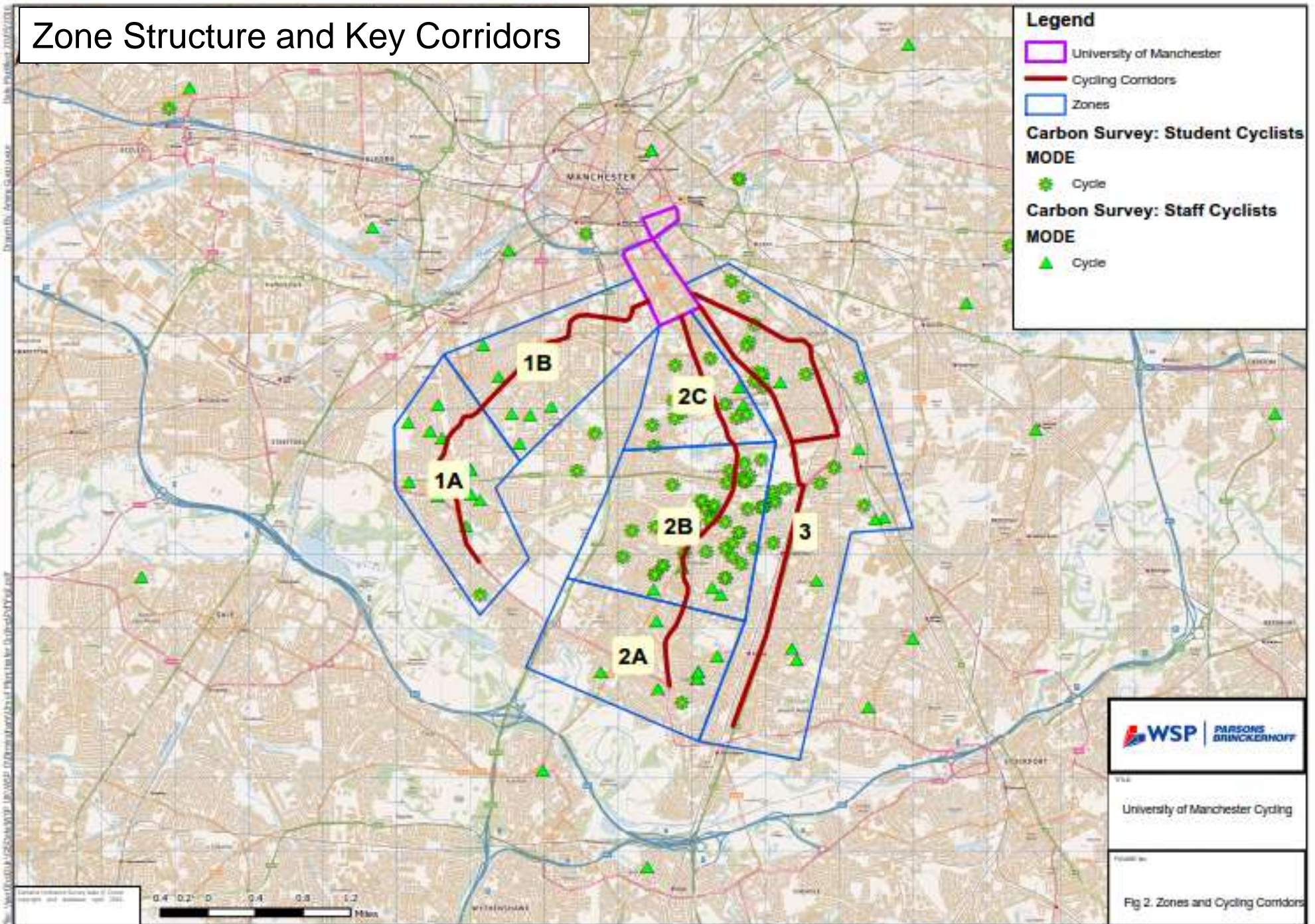
Scenario 2: Cycling Growth due to improved infrastructure



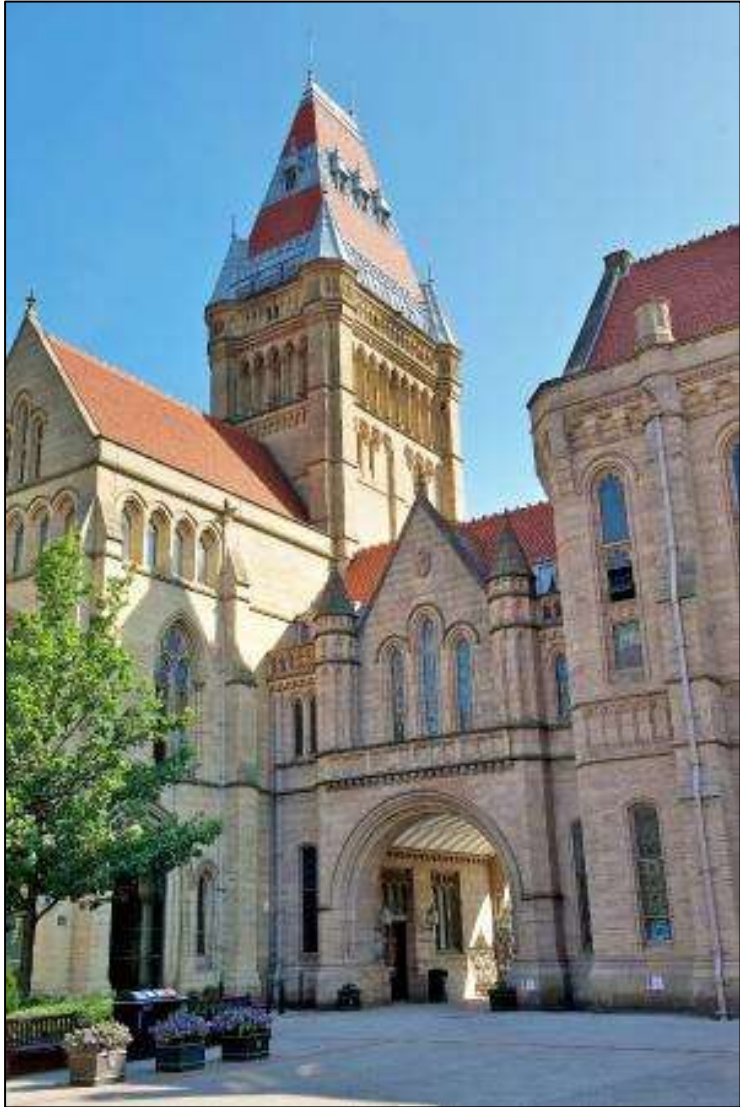
Analysis of Carbon Commute Survey



Zone Structure and Key Corridors



SCENARIO 1 – GROWTH BASED ON UoM GROWTH ASPIRATIONS



- Existing cycle demand:
 - Students - 2,298
 - Staff – 804
- 7% increase in students between 2015 & 2020.
- Assumed uniform growth of 1.4% per annum.
- Continued growth from 2020 to 2025.
- No increase in staff numbers.
- 1,100 student residences from City Campus and Victoria Park residences to Fallowfield residences.
- Increase in student cyclists:
 - 343 without relocation of students to Fallowfield.
 - 450 with relocation of students to Fallowfield.

SCENARIO 2 – CYCLING GROWTH DUE TO IMPROVED INFRASTRUCTURE - DISAGGREGATE MODE CHOICE MODEL



- Development of a disaggregate mode choice model as outlined in TAG unit A5.1.
- Increase in cycle mode share due to improved attractiveness of routes.
- Only applicable to commuter cyclists and assumes utility of other modes remain constant.
- Trips of 7.5 miles or less only.
- Maximum of 40% of commuters will cycle.
- Increase in cyclists:
 - Students – 595 to 723
 - Staff - 55

CYCLE PARKING AUDITS

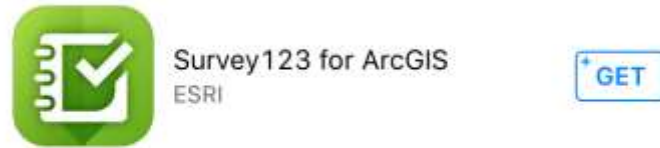
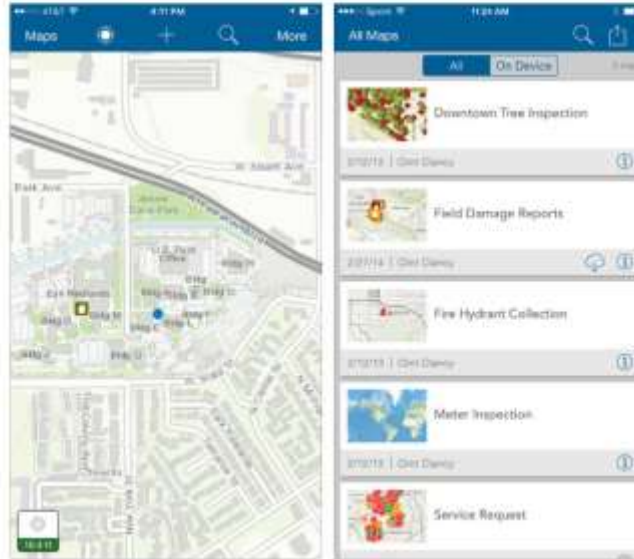
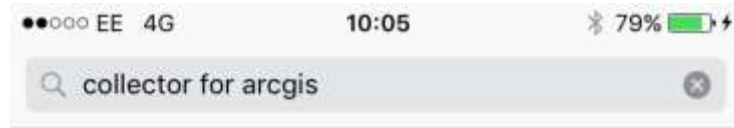
- **Two Bespoke Surveys**
 - Existing Cycle Parking Facilities
 - Potential Cycle Parking Locations
- **Greater Manchester (GM) Cycle Parking Guidance (TfGM 2014)**
- **Client engagement to agree survey content**
- **Red, Amber, Green (RAG) Assessment of facility and location quality**
- **Location of Fly Parking**



DATA COLLECTION PROCESS

- **Two week survey period in May 2016**
- **During University term time**
- **Teams of two surveyors**
- **Full risk assessments undertaken prior to surveys**
- **Data collected using iPads**
- **This enabled quick, reliable and accurate data collection to be undertaken.**





Cancel Sign In

Sign In

Username
UoMCycle

Password
●●●●●●●●●●

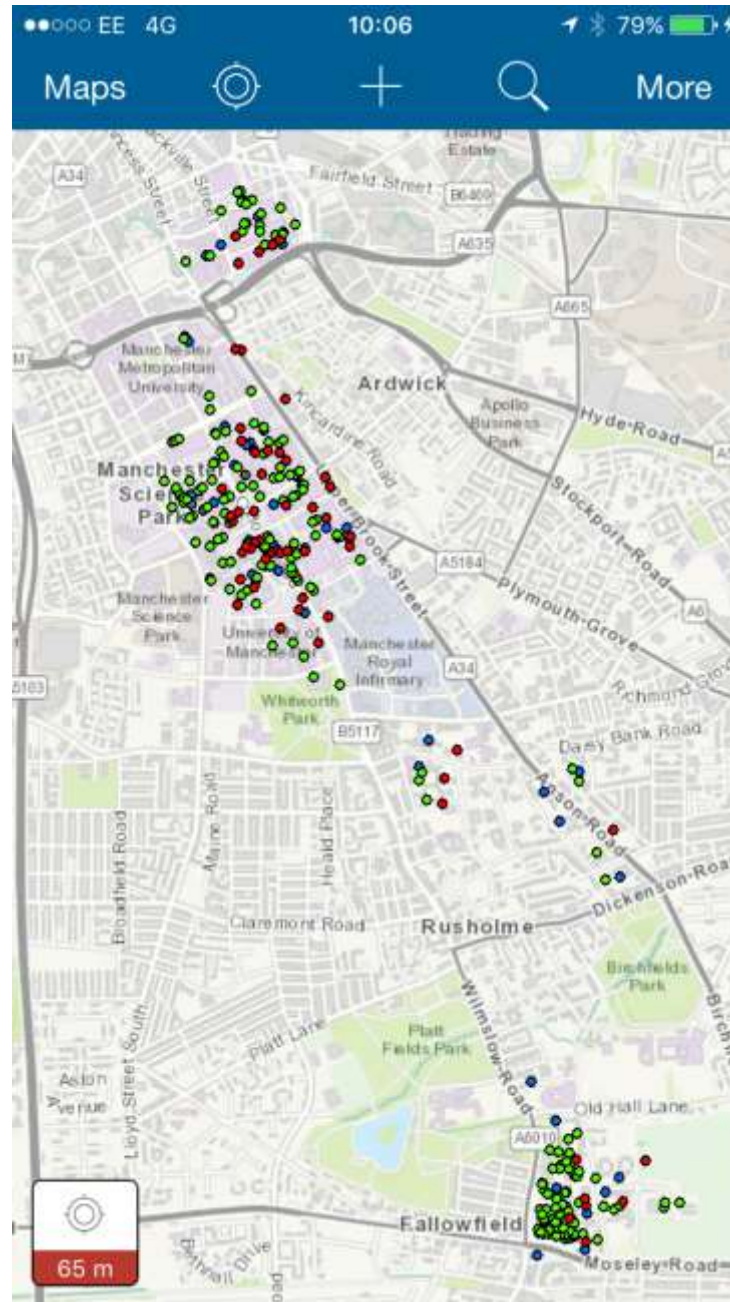
SIGN IN

OR

Sign in with ENTERPRISE ACCOUNT

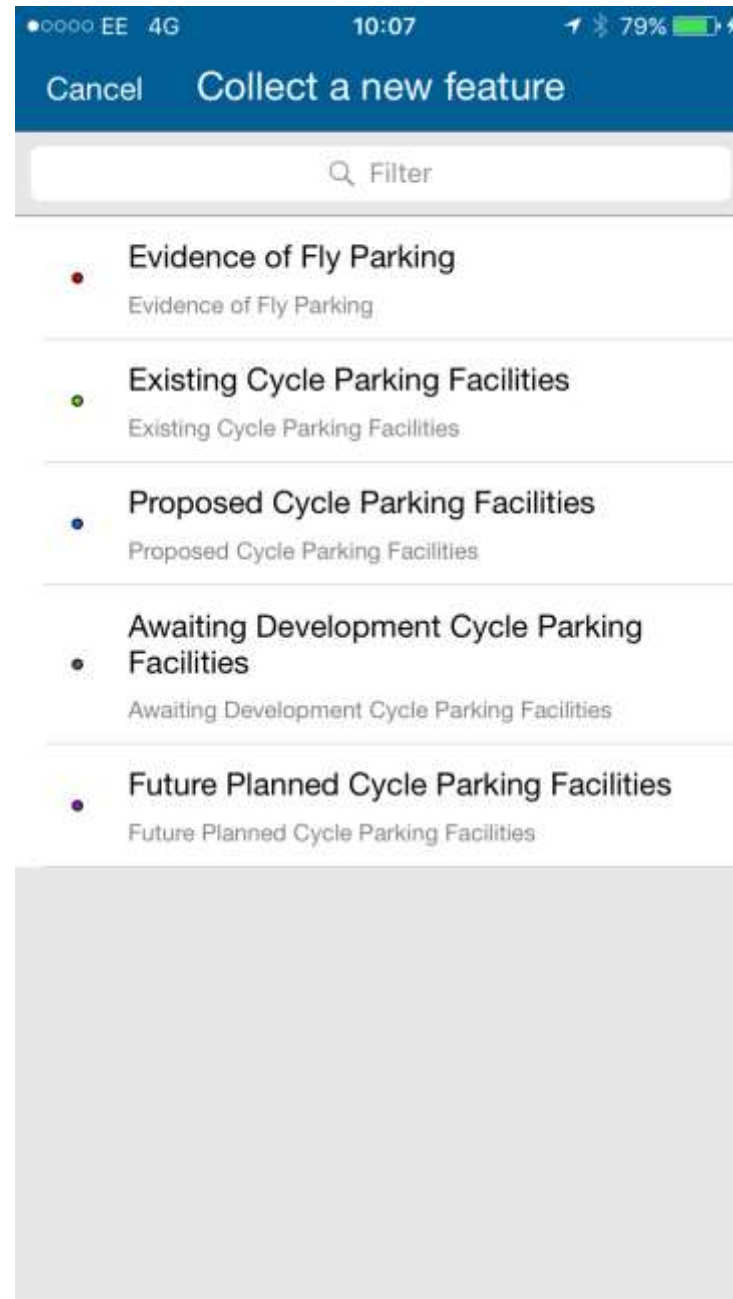
Done

1 2 3 4 5 6 7 8 9 0
- / : ; () £ & @ "
#+= . , ? ! ' <X>
ABC space Go







The University of Manchester





●○○○○ EE 4G 10:07 79%

Cancel    Submit

Location 
No valid Location 65 m

1. Observations of fly-parking >
2. Has this location been identified as a possibility for t... >
3. Size of the area >
4. Is the location lockable? >
5. Potential level of natural surveillance >
6. Level of CCTV >
7. Level of lighting >
8. Level of visibility >
9. Level of accessibility >
10. Level of coherence >
11. Potential level of attractiveness >
12. Flooring material >

Cancel Done

1. Observations of fly-parking

Filter

<No value> ✓

Yes - 1-5 bicycles

Yes - 6-10 bicycles

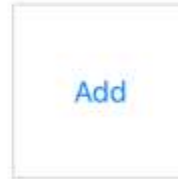
Yes - 10+ bicycles

No

Cancel
Settings
Map
Camera
Submit

Location
No valid Location
68.8 m

- Observations of fly-parking
Yes - 1-5 bicycles
- Has this location been identified as a possibility for t...
- Size of the area
- Is the location lockable?
- Potential level of natural surveillance
- Level of CCTV
- Level of lighting
- Level of visibility
- Level of accessibility
- Level of coherence
- Potential level of attractiveness
- Flooring material



<https://www.arcgis.com/home/signin.html>

Chris Davies

BSc MSc FRGS

Senior GIS Specialist | Smart Consulting

Chris.davies@pbworld.com

Mob: +44(0) 7581 536077

Andrew Carpenter

BA (Hons), MSc, AMCIHT

Transport Planner

andrew.carpenter@pbworld.com

Tel: +44 (0) 161 886 2449